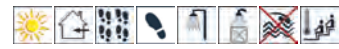


**MIR**<sup>®</sup>  
porcelain  
collections

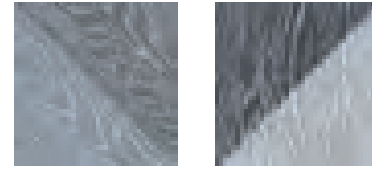
Designs for your lifestyle

Exclusive Distributors:  
MIR Group, Inc.  
2200 B Zanker Rd, San Jose, CA 95131  
Ph: +1 408 432-5400,  
+1 408 432-1000  
fax: +1 408 228-3924  
e-mail: info@mir-mosaic.com  
 [www.facebook.com/mir.mosaic](http://www.facebook.com/mir.mosaic)  
[www.mir-mosaic.com](http://www.mir-mosaic.com)

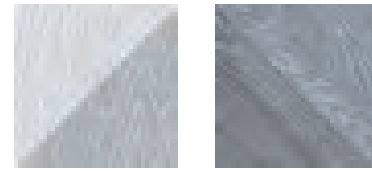
**URBANA**



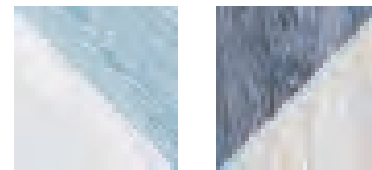
# URBANA



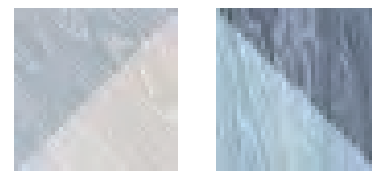
URBANA WOOD BLACK  
Size: 6,5x6,5"



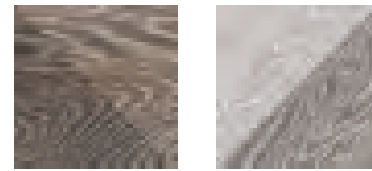
URBANA BRICK BLANCO  
Size: 4,3x13"



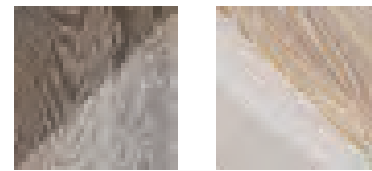
URBANA WOOD BLUE  
Size: 6,5x6,5"



URBANA BRICK GRIS  
Size: 4,3x13"



URBANA WOOD NATURAL  
Size: 6,5x6,5"



URBANA BRICK NATURAL  
Size: 4,3x13"



**CHARACTERISTICS PORCELAIN (Group B1a)** DATE: 20/08/2017

<b>MODEL:</b> URBANA BRICK GRIS	<b>SERIE:</b> URBANA		
SIZE: 110x33,15	CODE: 200000000000013141		
<b>1-CLASSIFICATION (UNE-EN 14411)</b>			
Dry Peaked Ceramic Tiles with low water absorption - Group B1a, E ≤ 0,5% for internal and external floors and walls.			
<b>2-SPECIFICATIONS (UNE-EN 14411 - ISO13006)</b>			
REQUIREMENTS	STANDARD APPLIED	REQUIREMENTS STANDARD	TEST RESULTS
Dimensions and Surface Quality	ISO 10545-2		PASS
Water Absorption	ISO 10545-3	E ≤ 0,5 %	PASS
Modulus of Rupture	ISO 10545-4	≥ 35 N/mm <sup>2</sup>	PASS
MOHS	EN 101	(*)	PASS
Cracking Resistance	ISO 10545-11	(*)	PASS
Resistance to chemicals		Min B	GA
- Household chemicals:chromium chloride solution 100 g/l		Min B	GA
- Swimming pool salts:Sodium Hypochlorite solution 20 mg/l			
- Acids and alkalies:		(*)	GLA
Low concentration:hydrochloric acid solution (3%)	ISO 10545-13	(*)	GLA
Citric acid solution 100 g/l		(*)	GLA
Potassium hydroxide 30 g/l		(*)	GLA
High concentration:hydrochloric acid solution (10%)		(*)	GHA
Lactic acid solution (5%)		(*)	GHA
Potassium hydroxide 100 g/l		(*)	GHA
Resistance to staining:	ISO 10545-14	Min 3	5
Cr2O3/FE2O3 + light oil			5
Abrasion Resistance (PEI)	ISO 10545-7	(*)	IV
Frost Resistance	ISO 10545-12	Required	PASS
Slip resistance	DIN 51130 (R)	(*)	
	ANSI 107.1 (DCCOF)	(*)	
	UNE-EN 12633(Class)	(*)	26/1
<b>3-APPLICATION GROUPS</b>			
According to its characteristics, Hiss de F. Gaya Fores, defines this model as group:			
<table border="1" style="width: 100%; height: 20px;"> <tr> <td style="width: 50%;"></td> <td style="width: 50%;"></td> </tr> </table>			

(\*) in manufacturer catalog

**1-CLASSIFICATION**

Water abs.	Group I	Group Ila	Group Iib	Group III
<b>production</b>	<b>E ≤ 0,5 %</b>	<b>0,5 % &lt; E ≤ 1 %</b>	<b>1 % &lt; E ≤ 10 %</b>	<b>E &gt; 10 %</b>
<b>A Extruded</b>	ISO 13006 Annex A1	ISO 13006 Annex A2a	ISO 13006 Annex A2b	ISO 13006 Annex A3
	Group Ila	Group Ila	Group Iib	Group III
<b>B Dry pressed</b>	ISO 13006 Annex B1a	Group B1a	Group B1b	Group B11
	Group B1b	ISO 13006 Annex B2a	ISO 13006 Annex B2b	ISO 13006 Annex B3
	0,5 % < E ≤ 1 %			
<b>C Others</b>	Group C1	Group C1a	Group C1b	Group C11

**2-CHARACTERISTICS**

RESISTANCE TO	CLASS	MEANING
Stains	1	The stain is removed with hot water and a damp cloth.
	2	The stain is removed with a weak cleaning agent.
	3	The stain is removed with mechanical cleaning and a strong cleaning agent.
Household chemicals Swimming pool salts	1	The stain is removed with stable solvent after immersion for 24 h.
	2	The stain is not removed.
	3	The stain is not removed.
Acids and alkalies	GA(V)	Non visible effect (if the hue becomes slightly different, this is not before change in appearance).
	GB(V)	Definite change in appearance.
	GC(V)	Partial or complete loss of the original surface.
	GA(IV)	Non visible effect (if the hue becomes slightly different, this is not before change in appearance).
	GB(IV)	Definite change in appearance.
	GC(IV)	Partial or complete loss of the original surface.
Low concentrations (L)	GA(III)	Non visible effect (if the hue becomes slightly different, this is not before change in appearance).
	GB(III)	Definite change in appearance.
	GC(III)	Partial or complete loss of the original surface.
	GA(II)	Non visible effect (if the hue becomes slightly different, this is not before change in appearance).
	GB(II)	Definite change in appearance.
	GC(II)	Partial or complete loss of the original surface.
High concentrations (H)	GA(I)	Non visible effect (if the hue becomes slightly different, this is not before change in appearance).
	GB(I)	Definite change in appearance.
	GC(I)	Partial or complete loss of the original surface.
	GA(0)	Non visible effect (if the hue becomes slightly different, this is not before change in appearance).
	GB(0)	Definite change in appearance.
	GC(0)	Partial or complete loss of the original surface.

- 3-APPLICATIONS GROUPS**
- GROUP A:** Recommended for moderate or low level transit. Suitable for bedrooms and/or bathrooms in houses (avoid any kind of abrasion).
- GROUP B:** Suitable for light or medium transit, such as rooms inside houses, except for kitchens or areas with direct access from outside.
- GROUP C:** Floorings recommended for medium transit, suitable for houses, all kind of rooms included kitchen or near to entrance areas.
- GROUP D:** Flooring suitable for heavy traffic, such as entrances to houses with direct access from the outside, all kind of rooms and professional offices.
- GROUP GRAN TRANSITO:** Flooring suitable and recommended for very heavy traffic.

**OBSERVACIONES:**

**CHARACTERISTICS PORCELAIN (Group B1a)** DATE: 20/08/2017

<b>MODEL:</b> URBANA BRICK NATURAL	<b>SERIE:</b> URBANA		
SIZE: 110x33,15	CODE: 200000000000013143		
<b>1-CLASSIFICATION (UNE-EN 14411)</b>			
Dry Peaked Ceramic Tiles with low water absorption - Group B1a, E ≤ 0,5% for internal and external floors and walls.			
<b>2-SPECIFICATIONS (UNE-EN 14411 - ISO13006)</b>			
REQUIREMENTS	STANDARD APPLIED	REQUIREMENTS STANDARD	TEST RESULTS
Dimensions and Surface Quality	ISO 10545-2		PASS
Water Absorption	ISO 10545-3	E ≤ 0,5 %	PASS
Modulus of Rupture	ISO 10545-4	≥ 35 N/mm <sup>2</sup>	PASS
MOHS	EN 101	(*)	PASS
Cracking Resistance	ISO 10545-11	(*)	PASS
Resistance to chemicals		Min B	GA
- Household chemicals:chromium chloride solution 100 g/l		Min B	GA
- Swimming pool salts:Sodium Hypochlorite solution 20 mg/l			
- Acids and alkalies:		(*)	GLA
Low concentration:hydrochloric acid solution (3%)	ISO 10545-13	(*)	GLA
Citric acid solution 100 g/l		(*)	GLA
Potassium hydroxide 30 g/l		(*)	GLA
High concentration:hydrochloric acid solution (10%)		(*)	GHA
Lactic acid solution (5%)		(*)	GHA
Potassium hydroxide 100 g/l		(*)	GHA
Resistance to staining:	ISO 10545-14	Min 3	5
Cr2O3/FE2O3 + light oil			5
Abrasion Resistance (PEI)	ISO 10545-7	(*)	IV
Frost Resistance	ISO 10545-12	Required	PASS
Slip resistance	DIN 51130 (R)	(*)	
	ANSI 107.1 (DCCOF)	(*)	
	UNE-EN 12633(Class)	(*)	26/1
<b>3-APPLICATION GROUPS</b>			
According to its characteristics, Hiss de F. Gaya Fores, defines this model as group:			
<table border="1" style="width: 100%; height: 20px;"> <tr> <td style="width: 50%;"></td> <td style="width: 50%;"></td> </tr> </table>			

(\*) in manufacturer catalog

**1-CLASSIFICATION**

Water abs.	Group I	Group Ila	Group Iib	Group III
<b>production</b>	<b>E ≤ 0,5 %</b>	<b>0,5 % &lt; E ≤ 1 %</b>	<b>1 % &lt; E ≤ 10 %</b>	<b>E &gt; 10 %</b>
<b>A Extruded</b>	ISO 13006 Annex A1	ISO 13006 Annex A2a	ISO 13006 Annex A2b	ISO 13006 Annex A3
	Group Ila	Group Ila	Group Iib	Group III
<b>B Dry pressed</b>	ISO 13006 Annex B1a	Group B1a	Group B1b	Group B11
	Group B1b	ISO 13006 Annex B2a	ISO 13006 Annex B2b	ISO 13006 Annex B3
	0,5 % < E ≤ 1 %			
<b>C Others</b>	Group C1	Group C1a	Group C1b	Group C11

**2-CHARACTERISTICS**

RESISTANCE TO	CLASS	MEANING
Stains	1	The stain is removed with hot water and a damp cloth.
	2	The stain is removed with a weak cleaning agent.
	3	The stain is removed with mechanical cleaning and a strong cleaning agent.
Household chemicals Swimming pool salts	1	The stain is removed with stable solvent after immersion for 24 h.
	2	The stain is not removed.
	3	The stain is not removed.
Acids and alkalies	GA(V)	Non visible effect (if the hue becomes slightly different, this is not before change in appearance).
	GB(V)	Definite change in appearance.
	GC(V)	Partial or complete loss of the original surface.
	GA(IV)	Non visible effect (if the hue becomes slightly different, this is not before change in appearance).
	GB(IV)	Definite change in appearance.
	GC(IV)	Partial or complete loss of the original surface.
Low concentrations (L)	GA(III)	Non visible effect (if the hue becomes slightly different, this is not before change in appearance).
	GB(III)	Definite change in appearance.
	GC(III)	Partial or complete loss of the original surface.
	GA(II)	Non visible effect (if the hue becomes slightly different, this is not before change in appearance).
	GB(II)	Definite change in appearance.
	GC(II)	Partial or complete loss of the original surface.
High concentrations (H)	GA(I)	Non visible effect (if the hue becomes slightly different, this is not before change in appearance).
	GB(I)	Definite change in appearance.
	GC(I)	Partial or complete loss of the original surface.
	GA(0)	Non visible effect (if the hue becomes slightly different, this is not before change in appearance).
	GB(0)	Definite change in appearance.
	GC(0)	Partial or complete loss of the original surface.

- 3-APPLICATIONS GROUPS**
- GROUP A:** Recommended for moderate or low level transit. Suitable for bedrooms and/or bathrooms in houses (avoid any kind of abrasion).
- GROUP B:** Suitable for light or medium transit, such as rooms inside houses, except for kitchens or areas with direct access from outside.
- GROUP C:** Floorings recommended for medium transit, suitable for houses, all kind of rooms included kitchen or near to entrance areas.
- GROUP D:** Flooring suitable for heavy traffic, such as entrances to houses with direct access from the outside, all kind of rooms and professional offices.
- GROUP GRAN TRANSITO:** Flooring suitable and recommended for very heavy traffic.

**OBSERVACIONES:**



URBANA