

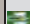



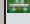



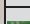

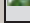
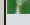



FECHA	MODELO	FORMATO
06/11/2017	STELLAR STEEL 1248	30x120
 Nº REFERENCIA DECLARACIÓN DE PRESTACIONES MARCADO CE Reference number of the declaration of performance CE marking	001PCI2013-07	

ENSAYO Test	RESULTADO Result	NORMA DE ENSAYO Testing standard
 PROCESO DE FABRICACIÓN Manufacture process	MONOCOCCIÓN Single firing	
 ESPESOR MEDIO mm Average thickness	11,3	UNE-EN ISO 10545-2: 1998
 DIMENSIONES Y ASPECTO SUPERFICIAL Dimensions and surface quality	CUMPLE CON LOS REQUISITOS APLICABLES A CADA MODELO DEFINIDOS EN LA NORMA UNE-EN 14411 PARA EL GRUPO B1a Conform to the requisites applicable to each model as defined in the standard UNE-EN 14411 for group B1a	UNE-EN ISO 10545-2: 1998
 ABSORCIÓN DE AGUA % Water absorption %	≤ 0,5	UNE-EN ISO 10545-3: 1997
 RESISTENCIA A LA FLEXIÓN N/mm2 Modulus of rupture N/mm2	≥ 40	UNE-EN ISO 10545-4: 1997
 DUREZA AL RAYADO DE LA SUPERFICIE SEGÚN MOHS Scratch hardness according to Mohs	6	EN 101: 1991 (UNE 67101)
 RESISTENCIA A LA ABRASIÓN Resistance to the abrasion	Clase Class 3	UNE-EN ISO 10545-7: 1999
 RESISTENCIA AL CHOQUE TERMICO Resistance to thermal shock	RESISTE LA PRUEBA It stands the test	UNE-EN ISO 10545-9: 1997
 RESISTENCIA AL CUARTEO Cracking resistance	RESISTE LA PRUEBA It stands the test	UNE-EN ISO 10545-11: 1994
 RESISTENCIA A LA HELADA Frost resistance	RESISTE LA PRUEBA It stands the test	UNE-EN ISO 10545-11: 1994
 RESISTENCIA A LAS MANCHAS Stain resistance	Clase Class 5	UNE-EN ISO 10545-14: 1998
 RESISTENCIA A LOS PRODUCTOS DOMÉSTICOS DE LIMPIEZA Y ADITIVOS PARA AGUA DE PISCINAS Resistance to cleansing products and chemical products for swimming pool water	Clase Class GA GA	UNE-EN ISO 10545-13: 1998
 RESISTENCIA A LOS ÁLCALIS Y ÁCIDOS DÉBILES Y FUERTES Resistance to soft and strong, alcalis and acids	Clase Class GH A/GLA GH A/GLA	UNE-EN ISO 10545-13: 1998
 RESISTENCIA AL DESLIZAMIENTO Resistance to slip	Clase Class C1	UNE-ENV 12633:2003
	Clase Class R9	DIN 51130:2010 Apdo 5
	Clase Class	DIN 51097:1992
	Coef. Coeff.	0,58



It's a Lifestyle...



Exclusive Distributor:  
 MIR Group, Inc.  
 2200 B Zanker Rd, San Jose, CA 95131  
 Ph: +1 408 432-5400,  
 +1 408 432-1000  
 fax: +1 408 228-3924  
 e-mail: info@mir-mosaic.com  
 www.facebook.com/mir.mosaic  
 www.mir-mosaic.com

# STELLAR



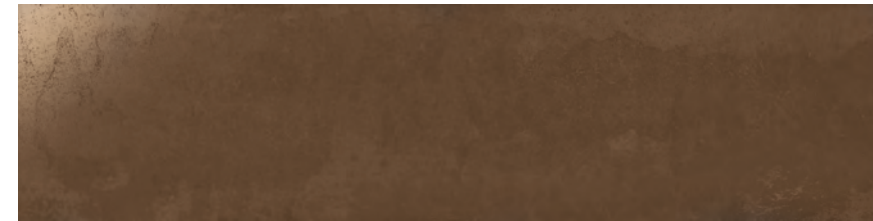
# STELLAR STEEL & COPPER



STELLAR STEEL 1248  
Size: 11.8X47.2"



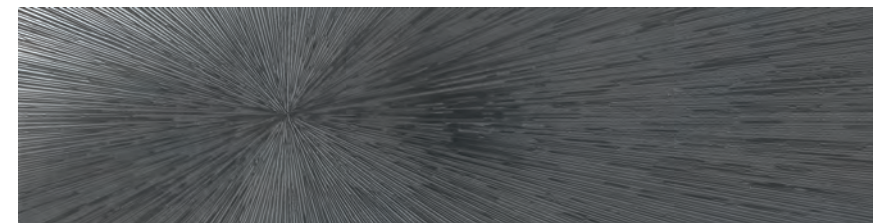
STELLAR STEEL HERRINGBONE  
Size: 11X11"



STELLAR COPPER 1248  
Size: 11.8X47.2"



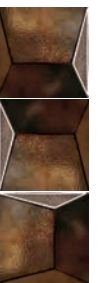
STELLAR COPPER HERRINGBONE  
Size: 11X11"



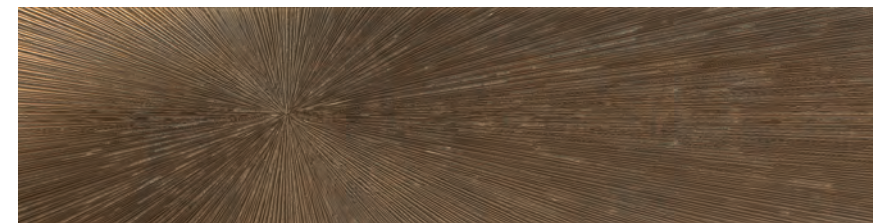
STELLAR DECO STEEL A 1248  
Size: 11.8X47.2"



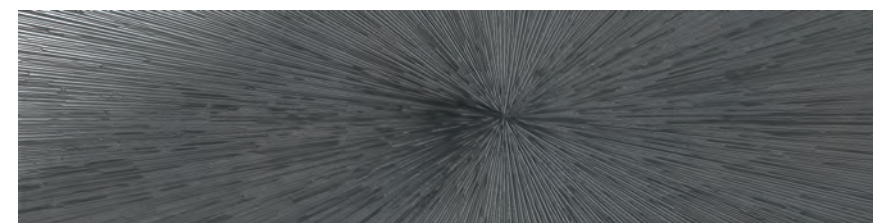
STELLAR STEEL  
DIMENSION  
Size: 4.9x4.9"



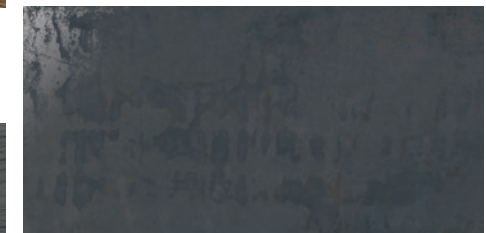
STELLAR COPPER  
DIMENSION  
Size: 4.9x4.9"



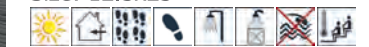
STELLAR DECO COPPER A 1248  
Size: 11.8X47.2"



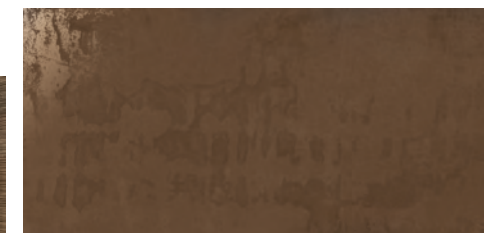
STELLAR DECO STEEL B 1248  
Size: 11.8X47.2"



STELLAR STEEL 1224  
Size: 12.5x25"



STELLAR DECO COPPER B 1248  
Size: 11.8X47.2"

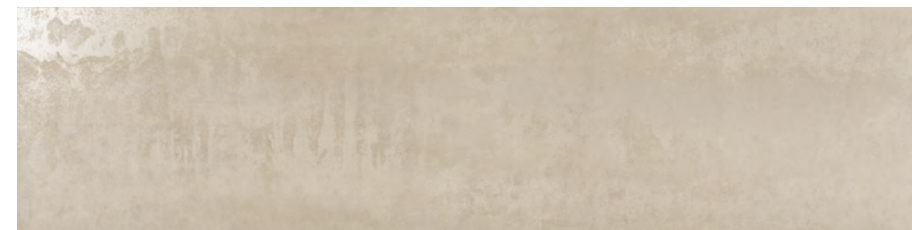


STELLAR COPPER 1224  
Size: 12.5x25"





# STELLAR SAND



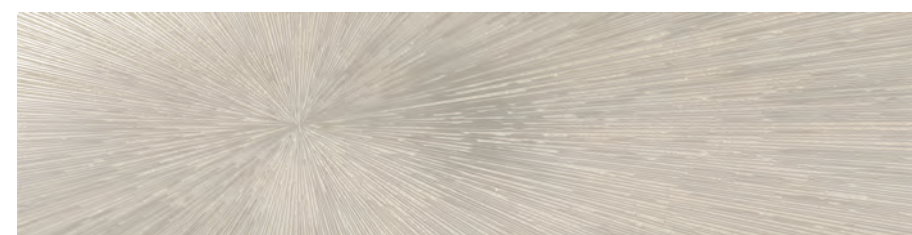
STELLAR SAND 1248  
Size: 11.8X47.2"



STELLAR SAND 1224  
Size: 12.5x25"



STELLAR SAND HERRINGBONE  
Size: 11X11"



STELLAR DECO SAND A 1248  
Size: 11.8X47.2"



STELLAR DECO SAND B 1248  
Size: 11.8X47.2"





# STELLAR WHITE



STELLAR WHITE 1248  
Size: 11.8X47.2"



STELLAR WHITE 1224  
Size: 12.5x25"



STELLAR WHITE HERRINGBONE  
Size: 11X11"



STELLAR DECO WHITE A 1248  
Size: 11.8X47.2"



STELLAR DECO WHITE B 1248  
Size: 11.8X47.2"

